

GR[^]VITZERO[®]
lightness_system



.Nuovvo

TECHNICAL DATA SHEET

As a result of our commitment to innovation, **Gravitzero®** is one of the lightest and most impact-resistant shower trays on the market. Developed by our material experts, it combines resins, **Gel Coat**, and high-strength rigid foam with highly compacted compounds, achieving unprecedented performance in the industry. An innovation that redefines durability without compromising on design.

85%

Lighter than a resin shower tray:

One of the main advantages is that, being so light and resistant, it can be palletised in very high volumes, ensuring maximum transport efficiency. Gravitzero® is the new lightweight solution that allows easy transport to the installation site. Without any help, a single person can install the shower tray effortlessly.



● Properties:

- Manufactured in mould by casting, giving each shower tray a non-slip surface.
- Standard DIN 51097:1992 CLASS C
- High-flow waste with stainless steel cover.
- Stainless steel grid included. Grid in the same colour as the tray, available in white and black options.
- Compatible with access ramp.

Lightweight mass



Anti-Slip



5-Year Warranty



Accessible trap



Silica-free material



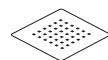
Large format



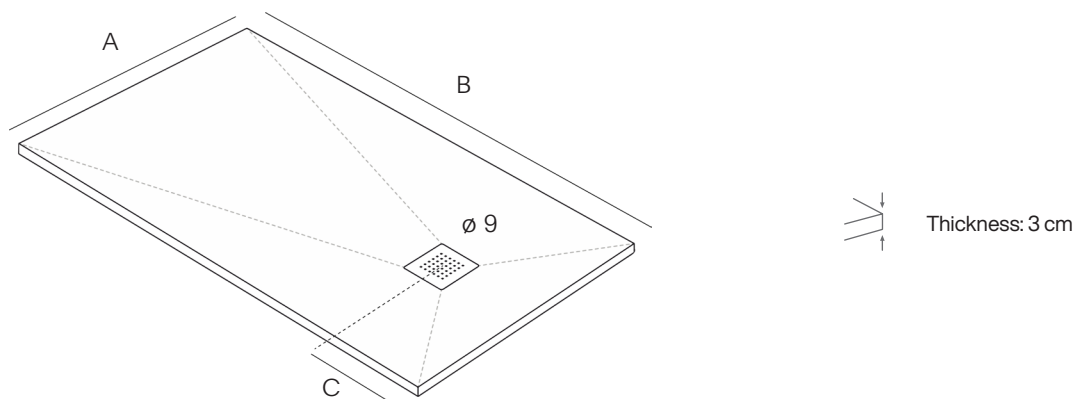
Made in Spain



Stainless steel grid included



● Dimensions:



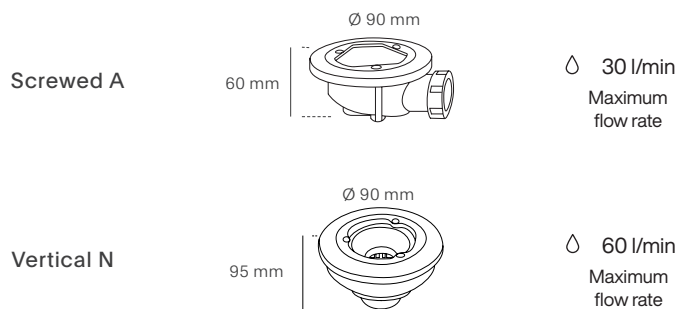
		B																			
		71,5	76,5	81,5	86,5	91,5	101,5	111,5	121,5	131,5	141,5	151,5	161,5	171,5	181,5	191,5	201,5	211,5	231,5		251,5
A	71	25	-	25	-	25	25	25	25	35	35	35	45	45	45	62	62	62	-	-	C
	76	-	25	25	-	25	25	25	25	35	35	35	45	45	45	62	62	-	-	-	
	81	-	-	25	-	25	25	25	25	35	35	35	45	45	45	62	62	62	-	-	
	86	-	-	-	25	25	25	25	25	35	35	35	45	45	45	62	62	-	-	-	
	91	-	-	-	-	25	25	25	25	35	35	35	45	45	45	62	62	62	-	-	
	101	-	-	-	-	-	25	25	25	35	35	35	45	45	45	62	62	62	62	62	

● Weight Table:

		B																				
		70	75	80	85	90	100	110	120	130	140	150	160	170	180	190	200	210	230	250		
A	70	3,8 kg	-	4,3 kg	-	4,8 kg	5,3 kg	5,8 kg	6,3 kg	6,9 kg	7,4 kg	7,9 kg	8,4 kg	8,9 kg	9,5 kg	10 kg	10,5 kg	11 kg	-	-		
	75	-	4,3 kg	4,5 kg	-	5,1 kg	5,7 kg	6,2 kg	6,8 kg	7,4 kg	7,9 kg	8,5 kg	9 kg	9,5 kg	10,1 kg	10,7 kg	11,2 kg	-	-	-		
	80	-	-	4,8 kg	-	5,4 kg	6 kg	6,6 kg	7,2 kg	7,8 kg	8,4 kg	9 kg	9,6 kg	10,2 kg	10,8 kg	11,4 kg	12 kg	12,6 kg	-	-		
	85	-	-	-	5,4 kg	5,7 kg	7 kg	7 kg	7,7 kg	8,3 kg	8,9 kg	9,6 kg	10,2 kg	10,8 kg	11,5 kg	12,1 kg	12,8 kg	-	-	-		
	90	-	-	-	-	6 kg	6,8 kg	7,5 kg	8,1 kg	8,8 kg	9,5 kg	10,2 kg	10,8 kg	11,5 kg	12,2 kg	12,8 kg	13,5 kg	14,2 kg	-	-		
	100	-	-	-	-	-	7,5 kg	8,2 kg	9 kg	9,7 kg	10,5 kg	11,3 kg	12 kg	12,8 kg	13,5 kg	14,3 kg	15 kg	15,8 kg	19 kg	19 kg		

*Approximate weights. Weight may vary within a margin of +/- 2 or 3 kg.

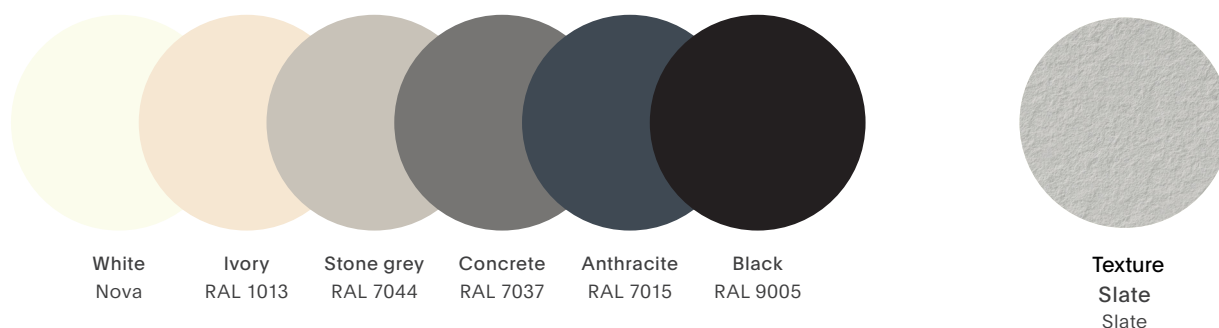
● Valves:



- Valve included
Screwed A (stainless steel), Vertical N (stainless steel)

- All our shower trays comply with the drainage requirements established in the UNE EN 251:2014 standard: Shower trays. Connection dimensions.

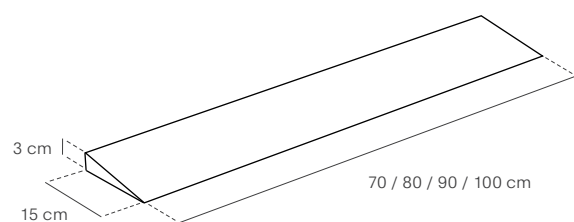
● Colours and texture:



In addition to these **6 standard colours**, any **RAL colour upon request** can also be ordered.

● Accessories:

Access ramp



Ramp not included



● Custom-made:

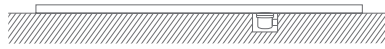
Due to the characteristics of the material, this shower tray cannot be cut either in our facilities or by the customer.

NOTICE: There is a margin of error of up to 1 cm due to production processes. The thickness tolerance of the tray is +/- 3 mm. The tolerance for the width and length of the material is +5 mm.

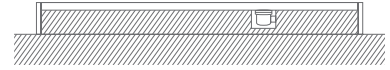
● Installation options:



Flush



On the floor



Semi-recessed with a masonry curb

NOTICE: To install the flush shower tray, a minimum floor depth of 8 cm is required to allow enough space for valve installation.

● Quality certifications:

Since May 1, 2012, manufacturers of shower trays for domestic use are required to market their products at the European level with the CE marking according to the EN 14527 standard, as this CE marking indicates a product's compliance with EU legislation and allows the free movement of products within the European Economic Area market.

- UNE-EN 14527:2016 +A1:2019: Shower trays for domestic use.
- DIN 51097-1992:CEN:TS: Critical angle slip resistance test for barefoot wet areas.
- UNE-EN 41901:2017: Slip resistance test for unpolished floors.

Analyses and tests carried out by the AIDIMME Technological Institute. All our products are certified for use at the European level.

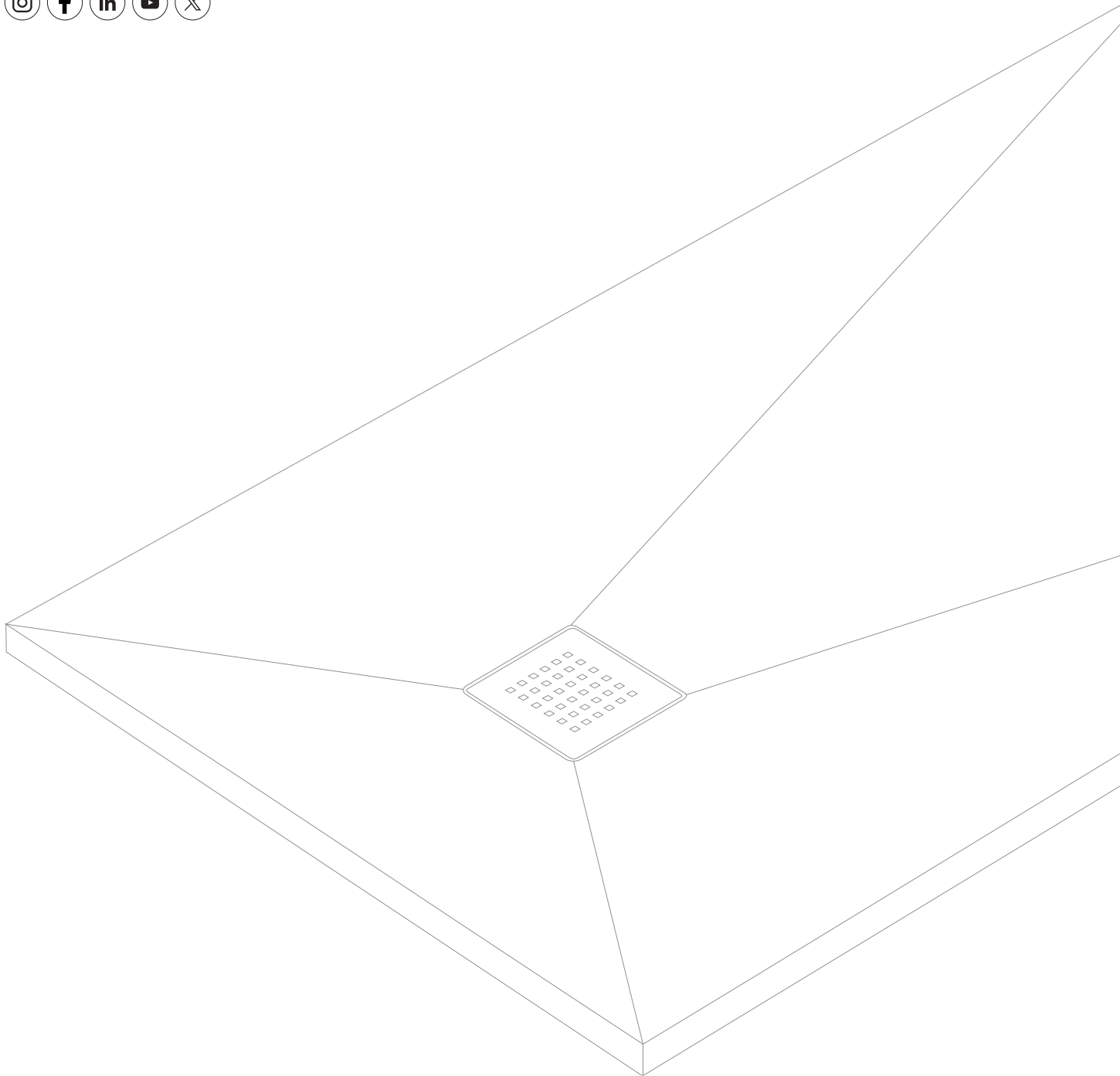


● Use and maintenance:

- Clean regularly, rinsing thoroughly and ensuring no cleaning product residues remain.
- Use a soft cloth or wipe to clean the surface.
- Avoid regular cleaning with bleach*, alcohols, acids, nail polish removers, lacquers and/or abrasive products.
- Do not use sodium hydroxide (caustic soda) or hair dyes due to their high methylene blue concentration.

* The grid may be damaged.

Nuovvo



NOVARALI, S.L.
C/ Portugal, 4
P.I. San Carlos
03370 Redován, Alicante, Spain
T. +34 965 681 207
info@nuovvo.com
www.nuovvo.com