

# Curve



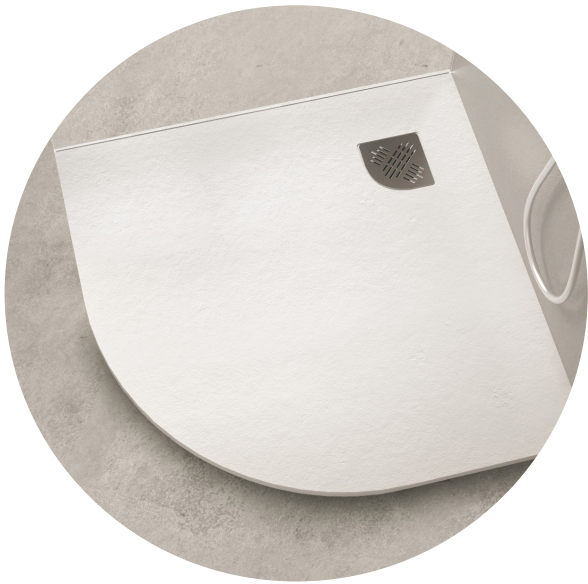
**.Nuovvo**

TECHNICAL DATA SHEET

**Curve** is designed to fit perfectly into bathrooms where space is precious. Its curved shape allows it to adapt to traditional shower screens, optimising every centimetre without compromising on style. Available in two radii, 50 and 55 cm, it meets different layout needs. Its Slate texture adds a natural touch, and its subtle height makes it a discreet and functional ally for the most compact spaces.

● **Material:**

**Nuovvotech** is an advanced material made of resin and silica-free mineral filler, coated with a layer of gel coat that provides extraordinary resistance. Its innovative design makes it possible to create bathroom products with unique textures, shapes, and colors, taking customization to the next level.



● **Properties:**

- Manufactured in a mold through casting, giving each shower tray a non-slip surface.
- Standard UNE 41091:2017 CLASS 3. Standard DIN 51097:1992 CLASS C
- Can be easily cut with a diamond blade.
- Stainless steel grid included. Grid in the same colour as the shower tray, standard range available.

**Non-slip**



**5-year warranty**



**Accessible siphon**



**Silica-free material**



**Made in Spain**



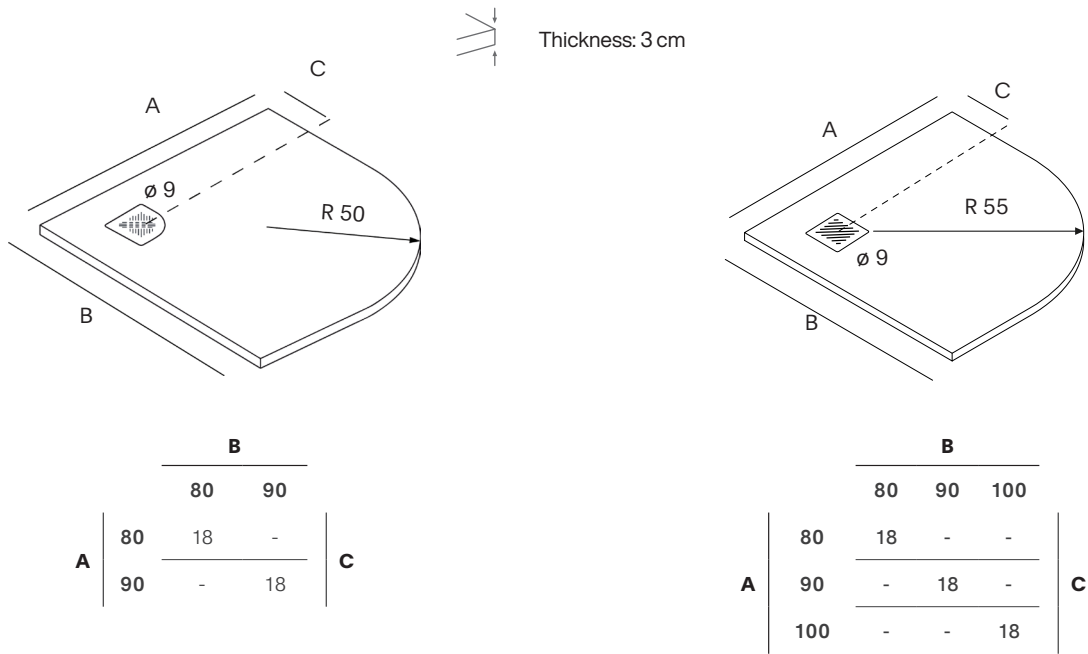
**R50 -Inox grid included**



**R55 -Inox grid included**

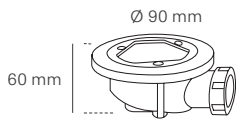


● Dimensions:



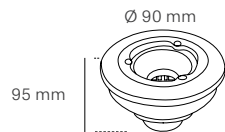
● Valves:

Screwed A



30 l/min  
Maximum  
flow rate

Vertical N

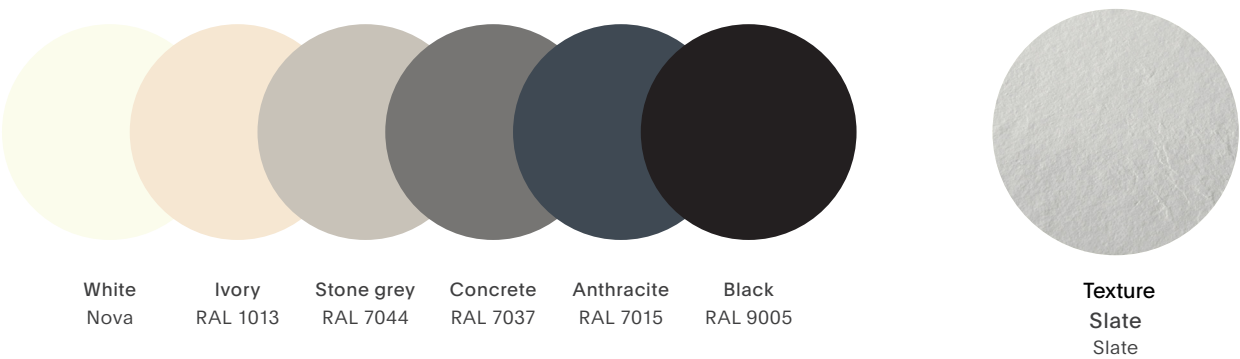


60 l/min  
Maximum  
flow rate

- Valve included  
Screwed A (stainless steel), Vertical N (stainless steel)

- All our shower trays comply with the drainage requirements established in the UNE EN 251:2014 standard: Shower trays. Connection dimensions.

● Colours and texture:



In addition to these **6 standard colours**, any **RAL colour upon request** can also be ordered.

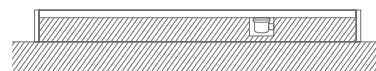
## ● Installation options:



Flush



On the floor



Semi-recessed with a masonry curb

**NOTICE:** To install the flush shower tray, a minimum floor depth of 8 cm is required to allow enough space for valve installation.

## ● Quality certifications:

Since May 1, 2012, manufacturers of shower trays for domestic use are required to market their products at the European level with the CE marking according to the EN 14527 standard, as this CE marking indicates a product's compliance with EU legislation and allows the free movement of products within the European Economic Area market.

- UNE-EN 14527:2016 +A1:2019: Shower trays for domestic use.
- DIN 51097-1992:CEN:TS: Critical angle slip resistance test for barefoot wet areas.
- UNE-EN 41901:2017: Slip resistance test for unpolished floors.

Analyses and tests carried out by the AIDIMME Technological Institute. All our products are certified for use at the European level.

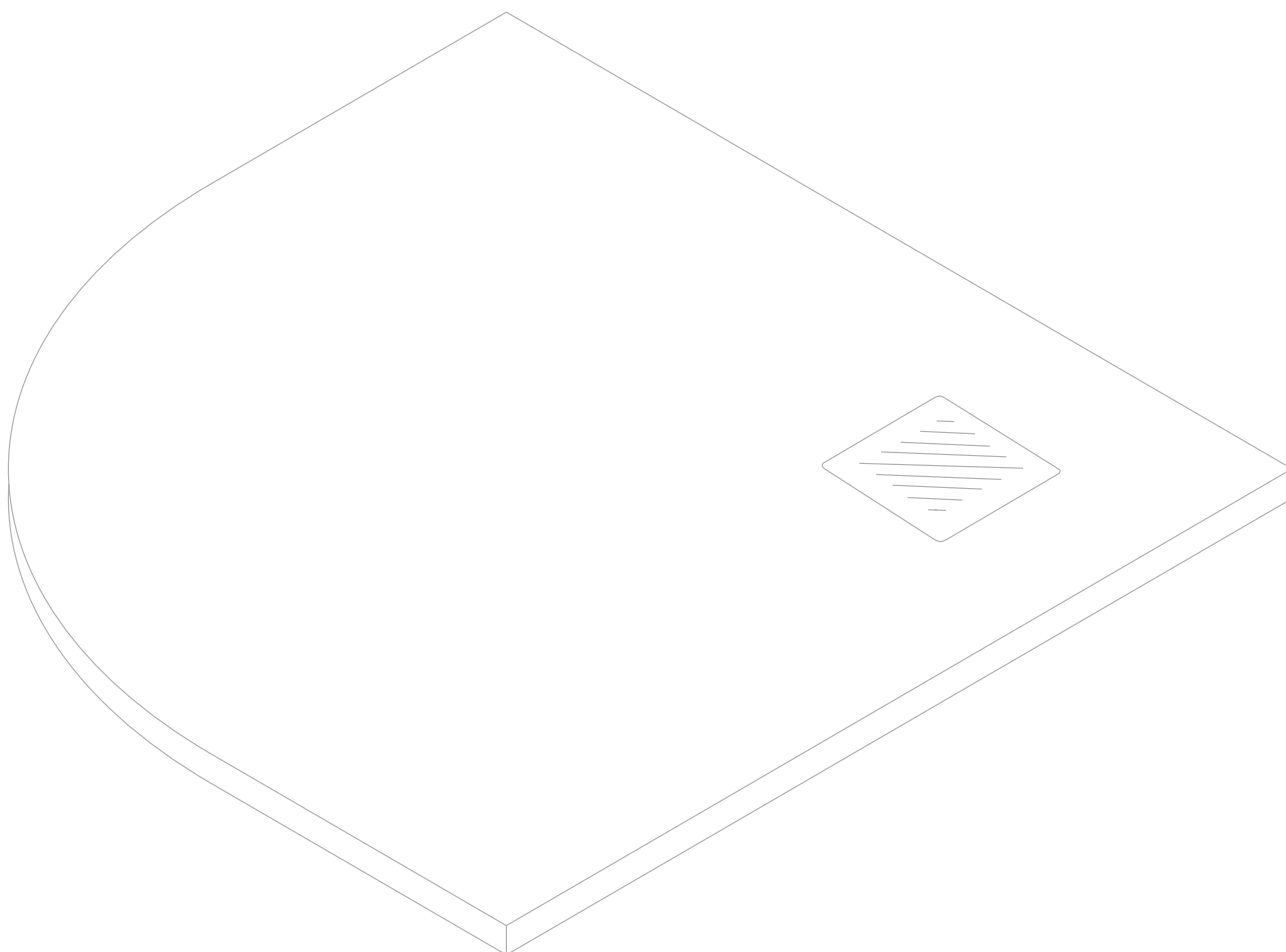


## ● Use and maintenance:

- Clean regularly, rinsing thoroughly and ensuring no cleaning product residues remain.
- Use a soft cloth or wipe to clean the surface.
- Avoid regular cleaning with bleach\*, alcohols, acids, nail polish removers, lacquers and/or abrasive products.
- Do not use sodium hydroxide (caustic soda) or hair dyes due to their high methylene blue concentration.

\*The grid may be damaged.

# Nuovvo



NOVARALI, S.L.  
C/ Portugal, 4  
P.I. San Carlos  
03370 Redován, Alicante, Spain  
T. +34 965 681 207  
[info@nuovvo.com](mailto:info@nuovvo.com)  
[www.nuovvo.com](http://www.nuovvo.com)